



Hydraulic Design Series Vibrators Performance Data

Vibrator Model	Unbalance	Start-Up	Speed	Flow	Force	Speed	Flow	Force	Speed	Flow	Force
	lb-in	psi	rpm	gpm	lbs	rpm	gpm	lbs	rpm	gpm	lbs
	kg-mm	bar		lpm	kN		lpm	kN		lpm	kN
C2-0.5-2HC	0.6	50	3,000	1.5	141	4,000	2.0	250	5,000	2.5	391
	6	3.4		6	0.6		8	1.1		9	1.7
C2-1.0-2HC	1.0	60	3,000	1.5	261	4,000	2.0	463	5,000	2.5	724
	12	4.1		6	1.2		8	2.1		9	3.2
C2-1.4-2HC	1.4	80	3,000	1.5	360	4,000	2.0	641	5,000	2.5	1,001
	16	5.5		6	1.2		8	2.8		9	4.5
C3-1.5-2HC	1.5	80	3,000	1.7	380	4,000	2.2	680	5,000	2.8	1,070
	17	5.5		6	1.7		8	3.0		11	4.8
C3-2.0-2HC	2.0	105	3,000	1.7	510	4,000	2.2	910	5,000	2.8	1,420
	23	7.2		6	2.3		8	4.0		11	6.3
C3-2.5-2HC	2.5	130	3,000	1.7	640	4,000	2.2	1,140	5,000	2.8	1,780
	29	9.0		6	2.8		8	5.1		11	7.9
C3-3.0-2HC	3.0	155	3,000	1.7	770	4,000	2.2	1,360	5,000	2.8	2,130
	35	10.7		6	3.4		8	6.0		11	9.5
C3-4.0-2HC	4.0	200	3,000	1.7	1,020	4,000	2.2	1,820	5,000	2.8	2,840
	46	13.8		6	4.5		8	8.1		11	12.6
C3-5.0-2HC	5.0	250	3,000	1.7	1,280	4,000	2.2	2,270	5,000	2.8	3,550
	58	17.2		6	5.7		8	10.1		11	15.8
C3-6.0-2HC	5.9	300	3,000	1.7	1,505	4,000	2.2	2,676	5,000	2.8	4,182
	68	20.7		6	6.7		8	11.9		11	18.6
C3-1.5-5HC	1.5	55	3,000	5.0	380	4,000	6.7	680	5,000	8.4	1,070
	17	3.8		19	1.7		25	3.0		32	4.8
C3-2.0-5HC	2.0	60	3,000	5.0	510	4,000	6.8	910	5,000	8.4	1,420
	23	4.1		19	2.3		26	4.0		32	6.3
C3-2.5-5HC	2.5	66	3,000	5.0	640	4,000	6.7	1,140	5,000	8.4	1,780
	29	4.6		19	2.8		25	5.1		32	7.9
C3-3.0-5HC	3.0	72	3,000	5.0	770	4,000	6.7	1,360	5,000	8.4	2,130
	35	5.0		19	3.4		25	6.0		32	9.5
C3-4.0-5HC	4.0	84	3,000	5.0	1,020	4,000	6.7	1,820	5,000	8.4	2,840
	46	5.8		19	4.5		25	8.1		32	12.6
C3-5.0-5HC	5.0	97	3,000	5.0	1,280	4,000	6.7	2,270	5,000	8.4	3,550
	58	6.7		19	5.7		25	10.1		32	15.8
C3-6.0-5HC	5.9	110	3,000	5.0	1,530	4,000	6.7	2,730	5,000	8.4	4,182
	68	7.6		19	6.8		25	12.1		32	18.6
D4.5-6-5HC CC4.5-6-5HC	6.0	110	3,000	5.0	1,530	4,000	6.7	2,730	5,000	8.4	4,260
	69	7.6		19	6.8		25	12.1		32	18.9
D4.5-8-5HC CC4.5-8-5HC	8.0	140	3,000	5.0	2,040	4,000	6.7	3,640	5,000	8.4	5,680
	92	9.7		19	9.1		25	16.2		32	25.3
D4.5-10-5HC CC4.5-10-5HC	10.0	180	3,000	5.0	2,560	4,000	6.7	4,540	5,000	8.4	7,100
	115	12.4		19	11.4		25	20.2		32	31.6
D7-12-8HC CC7-12-8HC	12.0	120	3,000	9.1	3,070	4,000	12.1	5,450	5,000	15.1	8,520
	138	8.3		34	13.7		46	24.2		57	37.9
D7-18-8HC CC7-18-8HC	18.0	180	3,000	9.1	4,600	4,000	12.1	8,180	5,000	15.1	12,780
	207	12.4		34	20.5		46	36.4		57	56.8
D7-25-8HC CC7-25-8HC	25.0	250	3,000	9.1	6,390	4,000	12.1	11,360	5,000	15.1	17,750
	288	17.2		34	28.4		46	50.5		57	79.0
D7-50-8HC CC7-50-8HC	50.0	490	3,000	9.1	12,780	4,000	12.1	22,720	5,000	15.1	35,500
	576	33.8		34	56.8		46	101.1		57	157.9

C3, CC4.5 and D4.5 Adjustable Weight Models provide settings for all listed unbalance ratings.

Hydraulic Design Series Vibrator Dimensions									
Vibrator Model	Weight	A	B	C	D	E	F	G	H
		Height	Length	Width	Foot Width	Foot Thickness	Bolt Hole	Bolt Centers	Port Size
	lb	in	in	in	in	in	in	in	in
	kg	mm	mm	mm	mm	mm	mm	mm	
C2	13.94	6.12	5.69	6.63	1.50	5.09	0.44	5.50	3/4 - 16 SAE
	6.32	155	145	168	38	129	11	140	
C3	40.00	8.12	9.25	11.00	3.00	0.88	0.78	8.00	3/4 - 16 SAE
	18.14	206	235	279	76	22	20	203	
D4.5	49.00	8.38	10.87	12.00	4.00	1.00	0.65	10.0 X 2.5	3/4 - 16 SAE
	22.23	213	276	305	102	25	17	254 X 64	
D7	98.00	11.38	12.68	18.00	6.00	1.38	0.78	16.0 X 2.0	3/4 - 14 NPT
	44.45	289	322	457	152	35	20	406 X 51	
CC4.5	56.00	8.60	11.08	12.50	0.88	N/A	Clamp	9.25	3/4 - 16 SAE
	25.40	218	281	318	22			235	
CC7	90.00	11.38	12.68	14.50	1.12	N/A	Clamp	11.25	3/4 - 14 NPT
	40.82	289	322	368	28			286	



D Series Bolt-on Style



C3 Series



CC Series Clamp-on Style

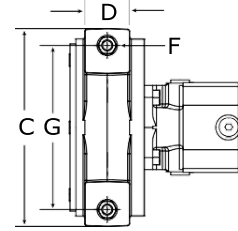
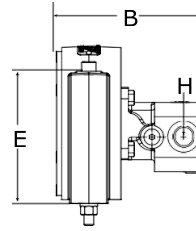
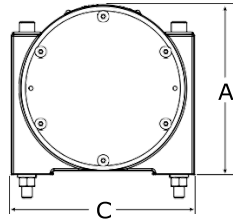


Hydraulic Motor	2HC	5HC	8HC
Port Size	¾" – 16 SAE O-RING	¾" – 16 SAE O-RING	¾" – 14 NPT
Minimum Hose Size	½ ID	5/8" ID	¾" ID
Displacement	0.129 CU IN	0.388 CU IN	0.698 CU IN
---	2.11 CC	6.36 CC	11.43 CC
Maximum Speed	5,000 RPM	5,000 RPM	5,000 RPM
Flow At	2.8 GPM	8.4 GPM	15.1 GPM
Maximum Speed	17.7 LPM	38 LPM	69 LPM
Maximum Continuous Pressure	3,000 PSI	1,600 PSI	2,000 PSI
---	207 BAR	110 BAR	138 BAR
Maximum Intermittent Pressure	4,000 PSI	2,500 PSI	3,000 PSI
---	276 BAR	172 BAR	207 BAR
Maximum Back Pressure	350 PSI	350 PSI	350 PSI

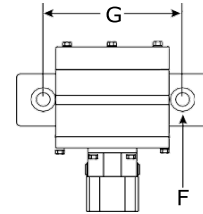
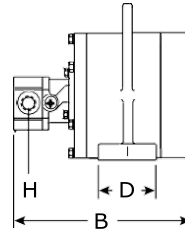
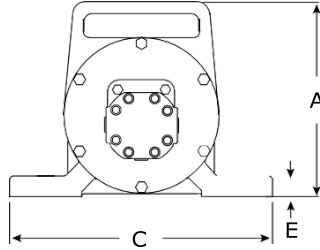
Hydraulic Design Series Vibrator Dimensional Drawings



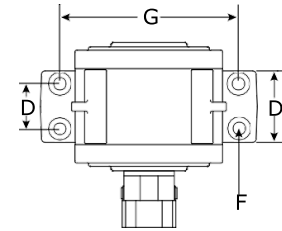
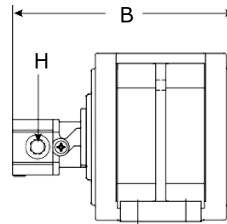
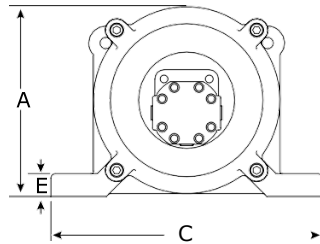
C2



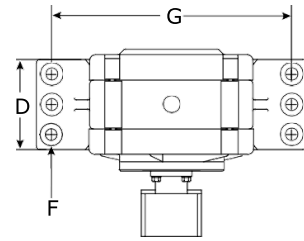
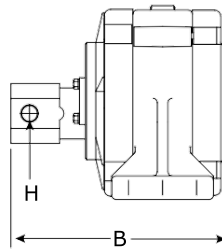
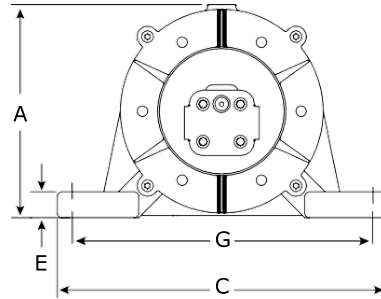
C3



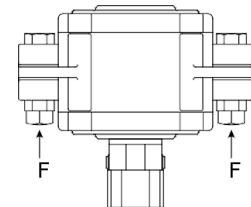
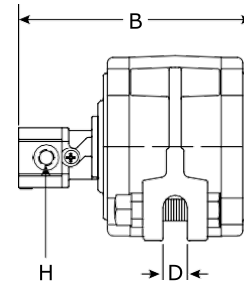
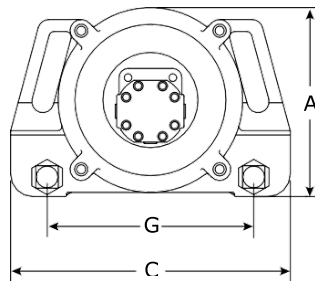
D4.5



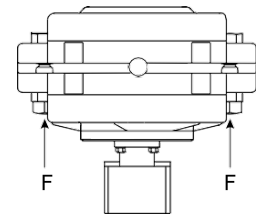
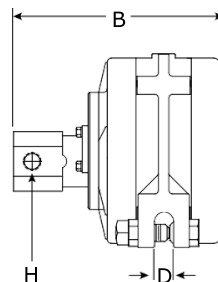
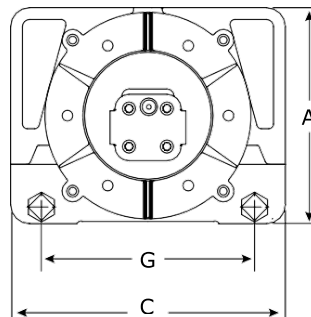
D7



CC4.5



CC7



Distributed By:

ChicagoVibratorProducts
Flow and Compaction
 Division of CVP Group
 800-842-7284 (P)
 866-247-7538 (F)
 Solutions@ChiVib.com
 www.ChicagoVibrator.com